



# Route 146

## CORRIDOR MANAGEMENT PLAN



### Corridor Working Group Meeting #4

Branford Fire Headquarters | 45 North Main Street, Branford, CT 06405

May 25, 2023 | 2:30pm

# Route 146 Corridor Management Plan (CMP) Corridor Working Group Meeting Agenda

- Welcome and Introductions
- Debriefs:
  - Public Meeting on April 25
  - Corridor Bus Tour on May 8
- Overview of Context-Sensitive Design
- Status Update on Stakeholder Meetings
- Next Steps
- Adjourn



# Route 146 CMP – 1<sup>st</sup> Public Meeting Overview

- April 25, 2023 at Branford Fire HQ
- Approximately 50 people attended
- Attended by First Selectmen of Branford & Guilford, Senator Cohen & Rep. Rader
- Questions and comments from audience focused on:
  - Road flooding
  - Bicycle/pedestrian safety and access
  - Impact of large vehicles (quarry trucks)
  - Speeding
  - Tension between safety/access and scenery, environmental and coastal issues
  - Make improvements while keeping road “beautiful”



## Route 146 CMP – Corridor Bus Tour Overview

- May 8, 2023
- 13 people attended
- Bus tour left from Branford Fire HQ
- Stopped at 8 locations (bypassed a couple as deemed not necessary to stop)



# Corridor Bus Tour Overview

## Stop #1: S. Montowese Street at Railroad Underpass (Branford)

- Gateway project in 1990s
- Drains in underpass go straight into river; flooding is an issue here
- Sight line issues due to road grade
- Pine Orchard Road and S. Montowese Street intersection
- Lowest bridge clearance of all bridges on 146



# Corridor Bus Tour Overview

## Stop #2: Totoket Road at Railroad Underpass (Branford)

- Similar width and clearance issues as S. Montowese Street underpass
- No pedestrian access
- Pavement condition
- Totoket Road intersection near underpass is highly skewed with limited sight distance



# Corridor Bus Tour Overview

## Stop #3: Leetes Island Road/Thimble Island Road (Branford)

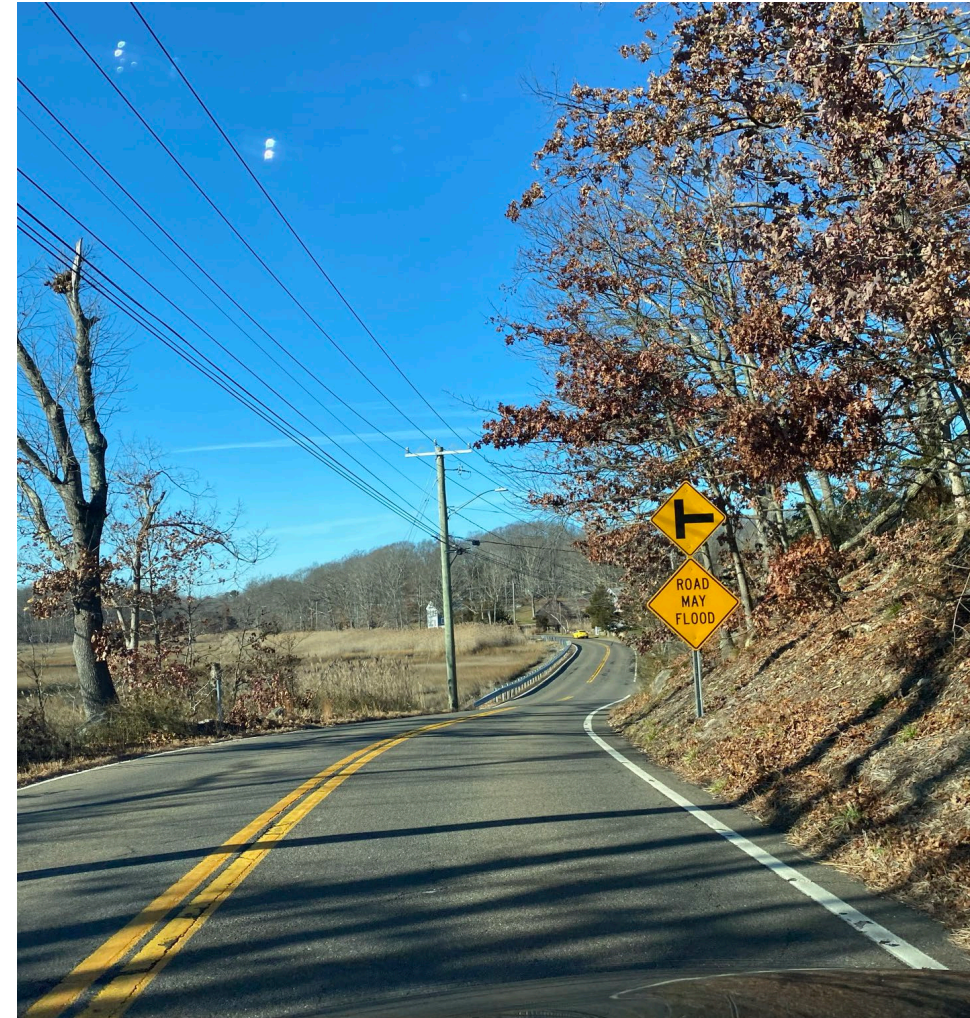
- Intersection is askew and off-center
- Some sidewalks but no crosswalks
- Major utility pole on northeast corner



# Corridor Bus Tour Overview

## Stop #4/5: Leetes Island Road/Quarry Road, Jarvis Creek (Branford)

- Frequent flooding around Jarvis Creek
- Must use Sawmill Road to go around – narrow, one-lane road
- Quarry trucks go westbound to get to I-95
- Brush dumped at a pull-off
- Invasive plants block scenic views





# Corridor Bus Tour Overview

## Stop #6: Leetes Island Road/Moose Hill Road (Guilford)

- Simon Leete gravestone nearby
- High speeds, sightline issues, esp. westbound
- Frequent pedestrian crossing (drivers are directed to Sanborn Road to go southbound)
- Moose Hill Road as evacuation route during flooding
- Shell Beach as key destination for walking/biking



# Corridor Bus Tour Overview

## Stop #7: Water Street/Sachem Head Rad at Railroad Underpass (Guilford)

- No pedestrian/bike access to underpass
- Westwoods entrance as key destination for walking
- Frequent flooding cuts off Sachem Head residents
- Recent fatal crash – vehicle overturned, potentially due to ice sheeting



# Corridor Bus Tour Overview

## Stop #8: Water Street at Meadow Street (Guilford)

- Bridge floods regularly, in high tides and full moon
- Water almost to bottom of bridge during visit
- Sidewalk across bridge ends – desire to extend further west



# Corridor Bus Tour Overview

## Stop #9: Water Street at Whitfield St/Route 77 (Guilford)

- Next to Guilford Green
- Wide and off-set, large turning radii
- Cars with boat trailers use the intersection a lot to get to town boat launch
- CMP to help guide next steps for this intersection
- Also concerns about Boston Street/Park Street



# Corridor Bus Tour Overview

## Stop #10: Boston Street at Route 1 (Guilford)

- Skewed angle, high speeds on Route 1
- Recent sidewalk construction along Boston St to link up near Soundview Road



# Route 146 CMP – Status Update on Stakeholder Meetings

- Reaching out to stakeholders identified by CWG
- Setting up Active Transportation meeting
- To hold meetings by the end of June



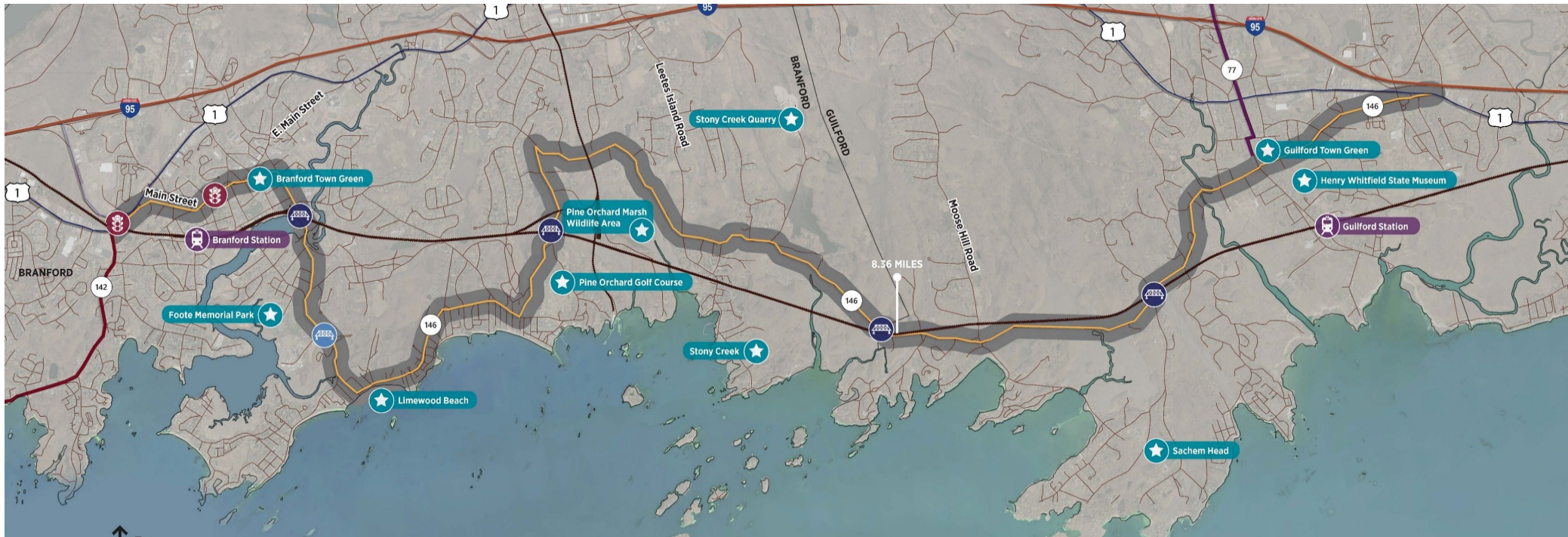
# Route 146 CMP – Possible Context-Sensitive Design Approaches

## *Documentation of Context in the Corridor*

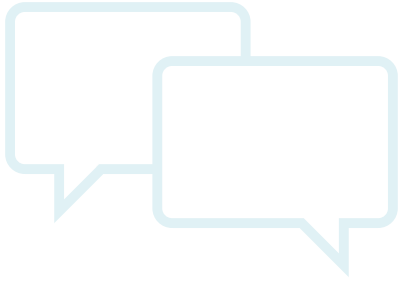
- Roadway Infrastructure – Structures
- Drainage/Storm Water Management – Updating Flooding Areas
- Roadway – Typical Cross Sections Preservation/Floodplain/Flooding/SLR
- Signing – Detailed Sign Listing
- Compliance to Standards/Barrier – Various Standards Review
- Bicycle and Pedestrian Amenities – Depiction of Amenities
- Commercial Traffic - Documentation

# Route 146 Corridor Management Plan – Next Steps

- Stakeholder Interviews: June 2023
- Context-Sensitive Documentation: Summer 2023
- Next CWG Meeting: TBD








# Discussion/Action Items

 [damstutz@vhb.com](mailto:damstutz@vhb.com)

 860-807-4417